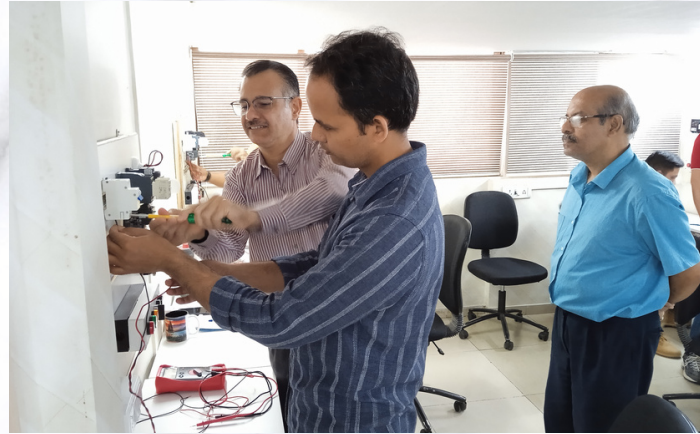




ISF MARITIME AND
OFFSHORE INSTITUTE

Training Catalog

www.isfgroup.in
isfgi@isfgroup.in





INSTRUCTOR - LED PROGRAMS

An instructor-led course, whether it be online or in a physical classroom setting, is a popular method of learning that allows students to interact with an expert in the subject matter. ISF's panel of expert trainers delivers several training programs for a wide range of participants.

Course Name	Duration	Target Participants
Electrical, Electronics, Automation and Controls	6 Days / 30 Hours	Engineers (All levels)
Electronically Controlled Marine Engines	3 Days / 15 Hours	Engineers - Mgmt. Level
Marine Electrical Program	2 Days - 16 Hours	Engineers (All levels)
Ballast Water Treatment System	1 Day - 8 Hours & 2 Days - 16 Hours	First Assistant Engineer, CE
Hydraulics Workshop	3 Days / 21 Hours	Engineers (All levels)
Pneumatics Workshop	2 Days / 16 Hours	Engineers (All levels)
Crane Operation and Maintenance	2 Days / 16 Hours	Engineers (All levels)
Bunker Quality	1 Day / 7 Hours	All Officers
Drydocking and Repairs Management	4 Days / 16 Hours	CE, 2E, New Superintendents
Materials and Processes	4 Days / 16 Hours	CE, 2E, New Superintendents
New Building Project Management	4 Days / 16 Hours	CE, 2E, New Superintendents
Commercial Ship Operations	1 Day / 7 Hours	Mgmt. level Deck and Engine Officers
New Building Engineering Processes	4 Days / 16 Hours	CE, 2E, New Superintendents
Bridge Team & Resource Management (BTRM) Course	5 Days	All Officers, Deck Officers, Cadets, Masters / Captains, Pilots
Risk Assessment and Risk Management	1 Day / 7 Hours	Deck and Engine Officers
Accident Investigation and Root Cause Analysis	1 Day / 7 Hours	Deck and Engine Officers
Shipboard Safety Officer's Course	3 Days / 21 Hours	Deck and Engine Officers
Safety and Operational Excellence Program	2.5 Days / 16 Hours	Deck, Engine and Saloon Ratings
Port State Control	1 Day / 7 Hours	Deck Officers
Petroleum Tanker Vetting Inspections	1 Day / 7 Hours	Deck Officers
Crew Safety	Half Day / 6 Hours	2nd, 3rd Officer, AB/OS/GS/Chief Cook/Bosun/Pumpman
Interpersonal and Communication Skills Training	1 Day / 7 Hours	Shore and Ship Staff
Leadership Skills Workshop	1 Day / 7 Hours	Mgmt. Level Officers, Managers, Superintendents
Team Building	2-3 Days	Mgmt. Level Officers, Managers, Superintendents



E-LEARNING (SELF PACED) PROGRAMS

Self-paced e-learning courses allow learners to complete coursework at their own pace and on their own schedule and often offer flexibility, convenience, and the ability to customize learning to fit individual needs.

Engineering

- Auxiliary Engine
- High Voltage systems (HVCO) (Management Level)
- Incinerator Regulations
- ODME Regulations
- OWS Regulations
- Marine Boilers
- Marine Electrical
- Marine Electronics
- Centrifugal Pumps
- Centrifuges & Purification System
- Refrigeration and Air Conditioning
- Steering Gears
- Submerged Pump
- Oil Record Book
- Hydraulics

Language

- Maritime English Made Easy (MEME)

HSSEQ

- High Voltage Safety Training (HVSC)
- Crew Safety
- Deck and Galley Safety
- Engine Room Safety
- Electrical Safety
- Risk Assessment and Management
- Root Cause Analysis
- Marine Environmental Protection
- Shipboard Energy Efficiency Management Plan
- Shipboard Safety Officer Course
- Commercial Operations Shipping (COPS)
- Drug Abuse
- Piracy Awareness
- Self-Contaminated Breathing Apparatus

Marine Management

- Commercial Operations Shipping (COPS)
- Maritime Labor Convention

HR and Soft Skills

- Assertiveness Skills Development Program
- Multi-Cultural Awareness
- Effective Communication (Maritime)
- Conflict Management
- Motivation
- Stress Management
- Strategic Management
- Team Building

Nautical

- Bridge Procedures
- Hatch Covers
- International Maritime Dangerous Goods Code
- Ship Handling Basics

Ship Type / Section	Details / Description
Engine Room	
Non-Tankers	UMS Entry; Engine Control Room, Main and Emergency Switchboard; Engine Log books
Tankers	UMS Entry; Engine Control Room, Main and Emergency Switchboard; Engine Log books
All Ships	Engine Room Workshop, Designated Hotwork Area, Purifier Room
Non-Tankers	Around Engine Room; Gray water management
Tankers	Around Engine Room; Gray water management; COP Turbine Platform (T); Inert Gas System (T), IG O2 Analyzer (T), LSA-FFA
All Ships	Local maneuvering, Emergency Escape routes, Sewage Plant, Incinerator, Garbage station(s), Regular Tests
Non-Tankers	Bottom Platform, Oily water separator, Sludge/Bilge Systems, Equipment and Machinery
Tankers	Bottom Platform, Oily water separator, Sludge/Bilge Systems, Equipment and Machinery
All Ships	Entrance to Engine room, Steering Flat, Emergency Fire Pump, Hypermist System, Chemical Locker
Non-Tankers	Pre-Arrival Checks and Eleventh Hour checks
Tankers	Pre-Arrival Checks and Eleventh Hour checks
Bridge	
All Ships	Magnetic Compass, Gyro Compass, Radars
All Ships	Echo Sounder, Speed Log, Course recorder, GPS/DGPS, Sound reception system, AIS, Sextant, Navtex, VDR, BNWAS
All Ships	ECDIS, ECDIS Maintenance and Position fixing
All Ships	Various other equipment, Ancillary Bridge equipment
All Ships	Navigation Policies and Procedures
All Ships	Observing Bridge Teamwork; A Live Audit
All Ships	Log Book entries, Fire Rounds, ETA Procedure, Master's Standing Orders
All Ships	Managements of Digital and Paper Charts and Publications
All Ships	Passage Plan

	GMDSS Equipment, GMDSS Log and GMDSS Certification
All Ships	Monkey Island, Battery Locker
All Ships	Pre-Arrival Checks
All Ships	Eleventh Hour checks
All Ships	GPS, AIS and Sextant
All Ships	Radars and Doppler Log
All Ships	Navtex
All Ships	Various other Equipment
All Ships	VDR and Ancilliary Bridge Equipment
All Ships	Course Rec, Echo Sounder and BNWAS
All Ships	EPIRB and SART
All Ships	Logbooks
All Ships	Gyro and Magnetic Compasses
All Ships	Master's Standing Orders
All Ships	Monkey Island and Battery Room
All Ships	ETA & Fire Rounds
All Ships	UKC Calculations
All Ships	Passage planning 1
All Ships	Passage planning 2
All Ships	ECDIS Inspection Round
All Ships	ECDIS Safety Settings 1
All Ships	ECDIS Safety Settings 2
All Ships	GMDSS Equipment
Sub-Section: Hospital	Complete Pre-Inspection round of the Hospital
Sub-Section: Galley	Galley & Messrooms
	Store Rooms, Reefer Chambers & Pre-arrival checks
Oil Tankers	Fixed Gas Alarm Systems, Fixed Tank Level Gauges, Information Posted up in CCR
	Cargo Plan, Secondary Venting Requirements, Pumproom Emergency Bilge Suction, Ship Shore Safety Checklist, Other Checks in CCR
	Pre-arrival checks & Eleventh Hour checks
	Cargo Control Room - Oil Tankers

Sub-section: Accommodation Internals (Except above areas)	General checks , cabin inspections, Fire extinguishers, Fire Doors, Laundry/Drier Rooms, Common toilets, Changing Rooms, Garbage Receptacles and bins
Non-Tanker	Notice Boards, Smoking Rooms, Elevator, Other random checks
Tankers	Notice Boards, Smoking Rooms, Elevator, Other random checks
All Ships	Pre-arrival checks & Eleventh Hour checks
All Ships	Virtual Tour of the Accommodations Internal Areas
Subsection: Emergency HeadQuarters / Foam Room	
Non-Tanker	A Pre-Inspection round of the EHQ
Tankers	A Pre-Inspection round of the EHQ
Non-Tanker	Virtual Tour of the Emergency Head Quarters
Tankers	Virtual Tour of the EHQ /Foam Room
Deck Area	
Subsection: Main Deck (Areabetween Accommodation and Forecastle)	
Bulk Carriers	Main Deck - Forward of Midship
Tankers	Main Deck - Midship
Bulk Carriers	Main Deck - Accom to Midship
Tankers	Main Deck - Mooring Areas
Bulk Carriers	Pilot Ladder Maintenance
Tankers	Crane Inspection
Bulk Carriers	22 Checks in 5 Mins - Deck (A list of 22 handpicked Deck checks which will show you the condition of the vessel.)
Tankers	Gangway Inspection
Bulk Carriers	Hatch Covers
Tankers	Holds and Bilges
Bulk Carriers	Operational Tests on Deck
Tankers	Operational Tests on tankers
Bulk Carriers	Pilot Ladder Maintenance
Tankers	Crane Inspection

Subsection: After Deck Area (Area behind the Accommodation superstructure)	
All Ships	Just outside the Accommodation; LSA-FFA, Watertight doors, Vents, Deck Area Provision Crane
Non-Tanker	Emergency Generator room, CO2 room, BWTS Room, Vents
Tankers	Emergency Generator room, CO2 room, BWTS Room, Vents
Non-Tanker	Mooring Station, Gangway
Tankers	Mooring Station, Aft ETA
Non-Tanker	Paint Locker, MSDS
Tankers	Paint Locker, Sample Locker, MSDS
Non-Tanker	Pre-arrival checks and Eleventh Hour checks
Tankers	Pre-arrival checks and Eleventh Hour checks
All Ships	Aft Deck Area - Paint Store & Sample Locker
All Ships	Aft Deck Area - Specific areas
All Ships	Aft Deck Area - Mooring areas
All Ships	Aft Deck Area - Emergency Generator Room
All Ships	Aft Deck Area - General Round
All Ships	Aft Deck Area - Paint Store & Sample Locker
All Ships	Aft Deck Area - Specific areas
Subsection: Forecastle	
Non-Tankers	Moorings, Anchors and Anchoring equipment, Forecastle Deck area, Fore Mast
Tankers	SBM Stopper (T), Moorings, Anchors and Anchoring equipment, Forecastle Deck area, Fore Mast
Non-Tankers	Bosun's Store, Eductor System
Tankers	Bosun's Store, Eductor System
Non-Tankers	Pre-arrival checks & Eleventh Hour checks
Tankers	Pre-arrival checks & Eleventh Hour checks
All Ships	Virtual Tour of the Forecastle deck, Bosuns store and associated equipment
Subsection: Pumproom	
Oil Tankers	Top Platform

Oil Tankers	Pumproom Bottom, Sea Chest Valve, Other checks
Oil Tankers	Pre-arrival checks and Eleventh Hour checks
Oil Tankers	Virtual Tour of the Pumproom including Fire dampers.
LSA & FFA	
All Ships	L'buoy and MOB markers
All Ships	Emergency Fire Pump
All Ships	Fixed CO2 system
All Ships	Fire Control Plan
All Ships	EEBD
All Ships	Fire extinguishers
All Ships	Fixed High Exp Foam systems
All Ships	Fire mains and Fire hoses
All Ships	Liferaft
All Ships	Lifejackets
All Ships	Fireman's outfit
All Ships	IMO Symbols
All Ships	International Shore Connection
All Ships	Launching appliances
All Ships	Immersion Suits
All Ships	LSA FFA Documentation
All Ships	Lifeboats - Freefall
All Ships	Lifeboats - Totally enclosed
All Ships	Other fixed FFA
All Ships	Rescue Boats
All Ships	SCBA Compressor
All Ships	Vent fan stops and Fire flaps
All Ships	Foam Monitor
All Ships	Pre Arrival checks
All Ships	L'buoy and MOB markers
All Ships	Emergency Fire Pump
All Ships	Fixed CO2 system
All Ships	Fire Control Plan
All Ships	EEBD
All Ships	Fire extinguishers
All Ships	Fixed High Exp Foam systems
All Ships	Fire mains and Fire hoses
All Ships	Liferaft
All Ships	Lifejackets



All Ships	Fireman's outfit
All Ships	L'buoy and MOB markers
All Ships	Emcy Fire Pump and other Fixed FFA
All Ships	CO2 Rooms
All Ships	ISC Fire Flaps, Fire plan IMO symbols
All Ships	EEBD
All Ships	Fire extinguishers
Non Tankers	Foam Systems, Iso Valves, Applicators
Tankers	Foam Systems, Monitors, Iso Valves, Applicators
All Ships	Fire Hoses, Hydrants, Boxes
All Ships	Davit Launched Totally Enclosed Lifeboats and Launching Appliances
All Ships	Freefall Lifeboats and Launching Appliances
All Ships	Lifeboat Launching Appliances
All Ships	Rescue boats
All Ships	Liferaft
All Ships	Lifejackets Immersion suits
All Ships	Fireman's outfit, SCBA (Including Donning Procedure) & SCBA Compressor
All Ships	L'buoy and MOB markers
All Ships	Emcy Fire Pump and other Fixed FFA
All Ships	CO2 Rooms
All Ships	ISC Fire Flaps, Fire plan IMO symbols
All Ships	EEBD
All Ships	Fire extinguishers
Non Tankers	Foam Systems, Iso Valves, Applicators
Tankers	Foam Systems, Monitors, Iso Valves, Applicators
All Ships	Fire Hoses, Hydrants, Boxes
All Ships	Davit Launched Totally Enclosed Lifeboats and Launching Appliances
All Ships	Freefall Lifeboats and Launching Appliances
All Ships	Lifeboat Launching Appliances
All Ships	Rescue boats
All Ships	Liferaft
All Ships	Lifejackets Immersion suits
All Ships	Fireman's outfit, SCBA (Including Donning Procedure) & SCBA Compressor
Documentation	
Master's Documentation	Detailed Pre-Inspection guide for the Master's documents.

Customised to the Ship Type.	
Chief Engineer's Documentation	Detailed Pre-Inspection guide for the Chief Engineer's documents.
Customised to the Ship Type.	
Chief Officer's Documentation	Detailed Pre-Inspection guide for the Chief Officer's documents.
Customised to the Ship Type.	
Security Documentation	Detailed Pre-Inspection guide for the Security Officer's documents.
Customised to the Ship Type.	
Environmental Procedures	
All Ships	Marpol Violation and its Consequences
All Ships	Garbage Incineration
All Ships	Reporting MARPOL Violations
All Ships	Environmental Seals
All Ships	Emergency Bilge Connections
All Ships	Oily Water Separator & Audit Requirements
All Ships	Managing Bilge and Sludge on board
All Ships	Bunkering & Purifier Operations
All Ships	Handling Sewage, Gray Water and Ballast water
All Ships	Minimising Air Pollution
All Ships	Marpol Violation and its Consequences
All Ships	Garbage Incineration
All Ships	Reporting MARPOL Violations
Eleventh-Hour checks	
Oil Tankers	Bridge
Bulk Carriers	Bridge
Oil Tankers	Accommodation, Ship's Office, Aft Deck
Bulk Carriers	Accommodation, Ship's Office, Aft Deck
Oil Tankers	Engine room & Gangway
Oil Tankers	Main Deck & Forecastle
Bulk Carriers	Main Deck & Forecastle
Oil Tankers	Bridge

Bulk Carriers	Bridge
Oil Tankers	Accommodation, Ship's Office, Aft Deck
Bulk Carriers	Accommodation, Ship's Office, Aft Deck
Non Tankers	Bridge
Non Tankers	Accommodation & Aft Deck
Non Tankers	Main Deck and Forecastle
Oil Tankers	Bridge
Oil Tankers	Accommodation CCR Aft Deck
Oil Tankers	Main Deck and Forecastle
Oil Tankers	Pumproom
Inspector Junior	
(For Ratings & Cadets)	Emergency Alarms, Drills, Training, Fireman's Quotfit, SCBA, EEBD
All Ships	Anti-Pollution Awareness, Ballast water Convention, MARPOL Compliance declaration
	Enclosed Space Entry Procedures, Use of Gas equipment
	Hotwork Permits, Various Work Permits
	Risk Assessment and Tool box meetings, Smoking regulations, Drug and
	Alcohol Policy, Fire Round Procedure
	Deck Rounds, Mooring Systems and Operations
	Engine Room Rounds; Emergency Action - Bunker watch.
	Galley: Emergency Action; Use of comminuter; MLC Compliance
	Gangway access control procedures
	Precautions against exposure to toxic gases
	Vent Fan Stops; Garbage Regulations
	Ship Safety officer & Ship Security Officer
	Restricted Areas, ISPS Awareness, Cyber Security Precautions
	MLC Awareness
	ISM Awareness
	Bunkering procedures
Inspector Senior	Awareness of all Bridge equipment-AutoP changeover, VDR and Echo S
(For Deck and Engine Officers)	Ballast water and Sedimentation Management plan
All Ships	Bridge Manning Levels

	Enclosed Space Entry Procedures
	Hotwork Procedures & Welding Equipment
	Master's Standing Orders
	TBN
	Risk Assessment and Tool box meetings
	ECDIS
	Mooring Systems
	TBN
	Gas equipment
Simulation Games	
All Ships Deck Officers	Compasses, GMDSS, Standing Orders & other Bridge equipment.
All Ships Engine Officers	Emergency Generator, QCV, Engine Room general round, Steering flat
All Ships Deck and Engine Officers (Senior & Junior)	RA, Toolbox, Enclosed space
All Ships Deck rating & C/O	Receiving an Inspector at the Gangway
All Ships Deck Ratings	Deck Rounds and Moorings
All Ships Senior Deck/Engine Officers	Rest Hours
All Ships Deck and Engine Ratings	Fire Alarms, Drills, Lifeboat Engines, FFA, Emergency Equipment, Company
All Ships Deck Officers	Familiarisation
All Ships All Deck & Engine Officers	Safety Depth
All Ships C/E or 2/E due for promotion	Ballast Water Management; Certification related to BWM; Precautions
All Ships C/E or 2/E due for promotion	required during BWM
All Ships C/E or 2/E due for promotion	Handling known defects on board.; Testing Fire Sensors; Lube Oil Analysis;
All Ships C/E or 2/E due for promotion	Planned Maintenance System
Bulk Carriers Chief officer or 2/O due for promotion	Oil Record Book.; Training of Engine Room personnel; Oily water separator;
Oil Tankers Chief officer or 2/O due for promotion	Annex VI Compliance
All Ships Chief officer or 2/O due for promotion	Enclosed Space Entry; Toolbox Meetings

All Ships Chief officer or 2/O due for promotion	Tool box meetings; Rest Hours; Seal Management; Nearmiss reporting;
Non Tankers Chief officer or 2/O due for promotion	Stowage of Flammable liquids
Tankers Chief officer or 2/O due for promotion	Loadicator; Damage Stability; Hold cleaning Chemicals; Cargo Hazards; Cargo
All Ships Masters & C/O due for promotion	Plan; MSDS
All Ships Masters & C/O due for promotion	Loadicator; Damage Stability; Oil Record Book 2; Engine Room to Slop Oil
All Ships Galley Staff, Chief officer	transfer; Cargo Plan; MSDS
All Ships Deck Officers	Ballast water exchange; Shipboard Familiarization; Gas equipment
All Ships Deck Officers	Enclosed Space Entry; Toolbox Meetings
All Ships Deck Officers	Tool box meetings; Rest Hours; Seal Management; Nearmiss reporting;
All Ships Deck Officers	Stowage of Flammable liquids
All Ships PIC for LSA FFA (Deck/Engine officers)	Tool box meetings; Rest Hours; Seal Management; Nearmiss reporting;
All Ships Deck Officers	Stowage of Flammable liquids
Gamified Evaluations	
Oil Tanker	Senior Officer Tanker - Module 1
Oil Tanker	Senior Officer Tanker - Module 2
Oil Tanker	Junior Officer Tanker - Module 1
All Ships	Junior Officer - Module 2
All Ships	Deck Cadet - Module 1
All Ships	Deck Cadet Tanker - Module 2
All Ships	Senior Engineer Module 1
All Ships	Senior Engineer Module 2
All Ships	Senior Engineer Module 3
All Ships	Junior Engineer Module 1
All Ships	Junior Engineer Module 2
All Ships	Junior Engineer Module 3
All Ships	Engine Cadet 1
All Ships	Engine Cadet 2
All Ships	Engine or ETO Cadet 2
All Ships	Deck rating 1
All Ships	Deck rating 2
All Ships	Engine rating 1
All Ships	Galley rating

All Ships	ETO Evaluation 1
All Ships	ETO Evaluation 2
All Ships	Master- Safety Management
All Ships	Master- Navigation
All Ships	Master- Emergencies
All Ships	Master- Documentation & Certification
All Ships	Master- Inspector Questions
Oil Tanker	Master- Vessel Type
All Ships	CO- Cargo & Balast Operations
All Ships	CO- Crew Management
All Ships	CO- Emergencies
All Ships	CO- Safety Management
All Ships	CO- Inspector Questions
Oil Tanker	CO- Vessel Type
All Ships	2nd Off- Bridge Procedure and Equipment
All Ships	2nd Off- Cargo & Ballast Ops
All Ships	2nd Off- Emergencies
All Ships	2nd Off- Hospital medical Locker
All Ships	2nd Off- Inspector Questions
Oil Tanker	2nd Off- Vessel Type
All Ships	3rd Off- Bridge Procedure and Equipment
All Ships	3rd Off- Cargo & Ballast Ops
All Ships	3rd Off- Emergencies
All Ships	3rd Off- Port Documents
All Ships	3rd Off- Inspector Questions
Oil Tanker	3rd Off- Vessel Type
All Ships	Deck Rating- Emergencies
All Ships	Deck Rating- Gangway procedure
All Ships	Deck Rating- LSA & FFA
All Ships	Deck Rating- Inspector Questions
All Ships	Deck Rating- Watchkeeping & Rest Hours
Oil Tanker	Deck Rating- Vessel Type
All Ships	Galley Rating
All Ships	CE- Boilers
All Ships	CE- Bunkering
All Ships	CE- Documentation
All Ships	CE- Electrical
All Ships	CE- Pollution
All Ships	CE- Refregarator

Oil Tanker	CO- Vessel Type
All Ships	2nd Off- Bridge Procedure and Equipment
All Ships	2nd Off- Cargo & Ballast Ops
All Ships	2nd Off- Emergencies
All Ships	2nd Off- Hospital medical Locker
All Ships	2nd Off- Inspector Questions
Oil Tanker	2nd Off- Vessel Type
All Ships	3rd Off- Bridge Procedure and Equipment
All Ships	3rd Off- Cargo & Ballast Ops
All Ships	3rd Off- Emergencies
All Ships	3rd Off- Port Documents
All Ships	3rd Off- Inspector Questions
Oil Tanker	3rd Off- Vessel Type
All Ships	Deck Rating- Emergencies
All Ships	Deck Rating- Gangway procedure
All Ships	Deck Rating- LSA & FFA
All Ships	Deck Rating- Inspector Questions
All Ships	Deck Rating- Watchkeeping & Rest Hours
Oil Tanker	Deck Rating- Vessel Type
All Ships	Galley Rating
All Ships	CE- Boilers
All Ships	CE- Bunkering
All Ships	CE- Documentation
All Ships	CE- Electrical
All Ships	CE- Pollution
All Ships	CE- Refregarator
All Ships	CE- Safety
All Ships	CE- Steering
All Ships	CE- Survey
All Ships	2nd Eng- Boilers



All Ships	2nd Eng- Crew Management
All Ships	2nd Eng- Documentation
All Ships	2nd Eng- Main Engine
All Ships	2nd Eng- Pollution
All Ships	2nd Eng- Refregarator
All Ships	2nd Eng- Pumps
All Ships	2nd Eng- Steering
All Ships	2nd Eng- Auxiliaries
All Ships	3rd Eng- Air compressor
All Ships	3rd Eng- Auxiliaries engine
All Ships	3rd Eng- Auxiliary
All Ships	3rd Eng- Boilers
All Ships	3rd Eng- Main Engine
All Ships	3rd Eng- Pollution
All Ships	3rd Eng- Pumps
All Ships	3rd Eng- Refrigeration
All Ships	3rd Eng- Safety
All Ships	3rd Eng- Steering & Electrical
All Ships	4th Eng- Purifier
All Ships	4th Eng- Bunkering
All Ships	4th Eng- Auxiliary Engine
All Ships	4th Eng- LSA FFA
All Ships	4th Eng- Main Engine
All Ships	4th Eng- Pollution
All Ships	4th Eng- Pumps
All Ships	4th Eng- Refrigeration
All Ships	4th Eng- Safety watchkeeping
All Ships	EO- Auxiliaries
All Ships	EO- Boilers
All Ships	EO- Electrical
All Ships	EO- Refrigerator
All Ships	EO- Safety
All Ships	Crew- Main engine
All Ships	Crew- Pollution

All Ships	Crew- Safety
Shorts & Reels	
All Ships	Set of 12 reels
All Ships	Set of 51 reels
All Ships	Set of 107 reels
Tankers	Set of 10 reels
All Ships	Set of 125 reels
Tankers	Set of 13 reels
All Ships	Set of 119 reels
All Ships	Set of 7 reels
All Ships	Set of 9 reels
All Ships	Set of 13 reels
All Ships	Set of 12 reels
All Ships	Set of 52 reels
All Ships	Set of 13 reels
Oil Tankers	Set of 33 reels
Bulk Carriers	Set of 23 reels
All Ships	Set of 12 reels
Other Modules	
US Coast Guard Inspection	A set of 4 Modules which together form the entire guidance material for the seafarer to gain confidence when preparing for an USCG Inspection, and telling him what to expect.
All Ships	
AMSA (Australia) Inspection	A elaborate set of 6 Modules which together form the entire guidance material for the seafarer to gain confidence when preparing for an AMSA Inspection, and telling him what to expect. The program also includes a self audit system which can also be used for remote audits.
(Oil Tankers and Bulk Carriers)	

Annual Class Inspection	A set of 2 Modules which together form the entire guidance material for the seafarer to gain confidence when preparing for an Annual Inspection, and telling him what to expect.
All Ships	
Port State Inspections	A pictorial list of 99 most significant detainable deficiencies.
All Ships	A guide to an efficient PSC Inspection
Movement Book entries (AllShips)	Guidance to Movement Book entries
Maintaining Rest Hour records(All Ships)	Guidance to Rest Hour Records
Enclosed Space Entry	Procedures for Enclosed Space Entry
All Ships	A game to assess the decisions related to Enclosed space entry
	Guidance to Enclosed Space Entry procedures
	Guidance to Enclosed Space Entry procedures
	Guidance to Enclosed Space Entry procedures
	Guidance to Enclosed Space Entry procedures
	Guidance to Enclosed Space Entry procedures
Work Permits	Compliance with Work Permits (Example: Enclosed space entry permit)
All Ships	Guidance to Work Permits and Compliance
	Guidance to Work Permits and Compliance
	Guidance to Work Permits and Compliance
SEEMP	
All Ships	SEEMP Part 1
	SEEMP Part 2
	SEEMP Part 3
Oily water Separator	
All Ships	OWS - 1
	OWS - 2
	Bilge water management

Risk Assessment	Risk Assessment principles and basics (with examples)
	Risk Assessment principles and basics (without examples)
Reefer and Aircon Training	A set of 4 Modules which includes Gamification and Storytelling, used to train the ship staff on Reefer and Aircon systems. The process includes an inbuilt assessment to judge the competence of a person in handling real- life problems on board
All Ships	
All Ships	
All Ships	
Reefer and Aircon Training	
Boiler Training	A set of 3 Modules which includes Gamification and Storytelling, used to train the ship staff on Boilers & find out how that person would react to real world problems.
All Ships	
All Ships	
Auxilliary Engines	A set of 4 Modules which includes Gamification and Storytelling, used to train the ship staff on Auxilliary Engines in the Engine Room & find out how that person would react to real world problems.
All Ships	
All Ships	
All Ships	
Cybersecurity	A set of 6 Videos on Cybersecurity, used to train the ship staff on the vulnerabilities and precautions to be taken.
For All Ships and Office Staff	
Decisions	

Cargo Tales	
Engine Room Safety	A set of modules that take your through Engine Room Safety precautions through a detective storyline, including Gamification and Storytelling concepts, testing and confirming your knowledge along the way. Can be used both for verifying knowledge and/or for educating.
All Ships	
All Ships	
All Ships	
Pilotage: Conduct of the Bridge Team in Pilotage waters	
All Ships	A set of modules that focus on how to bridge team must conduct themselves during Pilotage. Depicts a real life scenario, together with instructions at each step.
All Ships	
Learning from a Grounding incident	
All Ships	Learning lessons taken from the depiction of a real incident, where candidates are encouraged to detect problems in th choices the bridge team makes that leads to an unfortunate incident.
SIRE 2.0 Awareness: Bridging the Gap	Intro to the SIRE 2.0 Awareness Course
Tankers	Intro to Instructors & SIRE 2.0
Tankers	Why SIRE 2.0
Tankers	The SIRE 2.0 Question Library
Tankers	Bow tie Analysis
Tankers	Inspection Sequence
Tankers	Living repositories + Photo Repository
Tankers	Certificate Repository
Tankers	Performance Influencing Factors (PIFs)
Tankers	Compiled Vessel Inspection Questionnaires (CVIQ)
Tankers	Pre-Inspection Questionnaire (PIQ)
Tankers	Events leading to an inspection
Tankers	Inspection Time Distribution
Tankers	Opening Meeting and Defect List

Tankers	Negative observation module
Tankers	Closing Meeting & Office Response
Tankers	Workshop - The Observation
Tankers	Workshop - The Inference
Tankers	F.A.Q.s - 1
Tankers	F.A.Q.s - 2
Tankers	F.A.Q.s - 3
Tankers	Aligning TMSA Element 14
Tankers	How OCIMF developed SIRE 2.0
Tankers	Practical Suggestions 1 (Mr Avinash)
Tankers	Practical Suggestions 2 (Mr Avinash)
Tankers	Practical Suggestions 3 (Mr Avinash)
Tankers	Practical Suggestions 4 (Capt. Vaz)
Tankers	Practical Suggestions 5 (Mr Avinash)





ONLINE ASSESSMENTS

A Holistic Solution...

ISF offers holistic testing solutions on indigenously developed web portals. The assessments and exams are suitable for companies looking to recruit new candidates and promote their seafarers and employees. These assessments are generated from a large question bank and renewed regularly and include a comprehensive administrator portal, certification, report generation, and other features.

Cadet Selection Test (CST)

New recruits (Pre presea and Post presea) are tested on various subject areas:

- English
- Logical Reasoning
- Physics + Maths + Chemistry
- Basic Marine Engineering
- Basic Deck - Technical
- Safety

For all types of entrants: 10+2, BE, DNS, BSc, GME

12 Personality Characteristics

12PC helps in identifying the various behavioral traits of candidates from entry to senior positions. Traits that are profiled include:

- Outgoing, Emotional Stable, Shrewd, Open to Change, Socially Precise, Abstract Thinking, Dominant, Rule Bound, Practical, Self-Assured, Group Oriented, Relaxed

Aptitude Test

A comprehensive online test for evaluating suitability of a candidate to take up sea career. Includes:

- Mechanical Reasoning
- Spatial Reasoning
- Abstract Reasoning
- Arithmetic Reasoning
- Verbal Reasoning

Competence Assessment Program (CAP) - Maritime

For assessing Deck, Engineering, Electrical officers and ratings in maritime domain subjects.

Specific ship type questions available for

- Chemical Tanker
- Gas Carrier
- Oil Tanker
- Bulk Carrier
- Container Ship
- General Cargo Vessel
- Ro-Ro Vessel

Competence Assessment Program (CAP) - Offshore

For assessing Deck and Engineering candidates in specific subjects on various vessel types:

- Offshore supply
- AHTS
- MSV
- PSV
- Crane, etc.

Maritime English Testing System (MET sys)

METsys is an interactive test with widespread question bank which has questions focusing on various aspects of the language and situations encountered onboard ships.

The METsys is available for different difficulty levels:

- METsys Level 1 – suitable for Ratings
- METsys Level 2 – suitable for Officers.

Other HR & Soft Skills Quizzes

- Cultural Competence Assessment
- Emotional Quotient
- Employee Engagement Index
- Leadership Skills Assessment
- Learning Style Self-Assessment
- Listening Skills Quiz
- Time Management Quiz
- Anger Management Quiz

Add company specific questions and use them for your company employees only with complete privacy and security!



ONBOARD CAREER PROGRESSION PROGRAMS (DISTANCE-LEARNING)

A Vessel is the best place for competence development for smooth career progression. A well-structured and executed program with monitoring onboard, through training department in a company, as well as professional mentors can go a long way in bringing about systematic competence development in a company. The E-SSLA program is designed to be an onboard career progression program which facilitates experience-based learning and encourages meaningful mentorship onboard.

Electronic Version

Program Bundle:

- Android app for candidates with 250+ task-based modules
- Suitable Android tablet for candidates
- App which can work onboard without internet connection
- Guidance notes and instruction manual
- Pre-joining briefing for the program by ISF
- Mentor evaluation and feedback for all tasks and modules
- Website access for company
- Comprehensive reports
- Debriefing and additional training after onboard tenure

Vessels covered:

- All vessels
- Crude Oil Tankers (in compliance with ICMG)
- Product Tankers (in compliance with ICMG)
- Chemical Tankers (in compliance with ICMG)

Ranks covered:

- Junior to third officers (with 3 difficulty levels)
- Third to second officers (with 3 difficulty levels)
- Second to chief officers (with 3 difficulty levels)
- Junior to Fourth Engineers (with 3 difficulty levels)
- Fourth to third engineers (with 3 difficulty levels)
- Third to second engineers (with 3 difficulty levels)
- Trainee Marine Engineers

Paper & Book Version

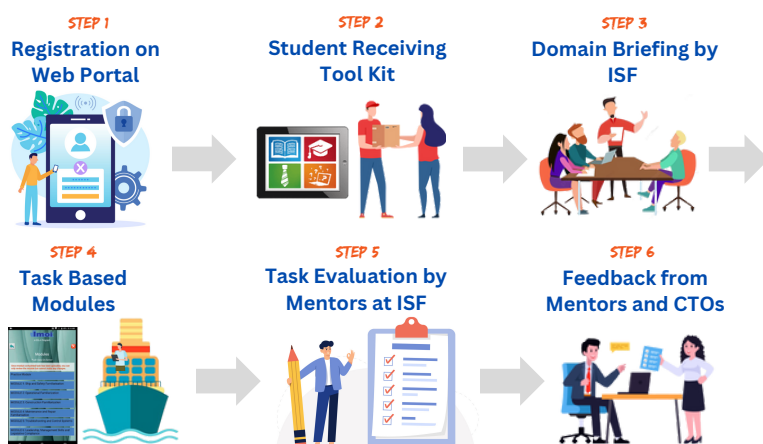
Program Bundle:

- 6 booklets for candidates with task-based modules
- Guidance notes booklet
- Pre-joining briefing for the program by ISF
- Mentor evaluation and feedback for all tasks and modules
- Comprehensive reports which are emailed to the company
- Debriefing and additional training after onboard tenure

Ranks covered:

- Trainee Marine Engineers
- Electrical Trainee Officers

Program Layout





VIRTUAL REALITY TRAINING PROGRAMS

Virtual reality training modules provide a realistic and immersive learning experience for users, are highly customizable, and can be tailored to meet the specific needs of a variety of learners. These training courses allow users to complete training exercises in a convenient and immersive way and have the potential to improve knowledge retention and provide a more engaging learning experience. The VR training is compatible with Oculus Quest. VR programs are offered through a collaboration between ISF and OMS VR.



Virtual Reality Programs on Oculus with PC

allows for multi-player and high definition programs

- Proficiency In Survival Craft
- Mid-Ship Crane Operation
- Tanker Operation
- Practical Examination Of Life Saving Appliances (LSA)
- Practical Examination Of Fire Fighting Equipment (FFE)
- Practical Examination Of Load Line Related Items
- Emergency Diesel Generator
- Steering Gear
- Fixed Deck Foam Fire Fighting System
- Emergency Fire Pump
- Helicopter Operation
- Wall Wash Test
- Proficiency In Fast Rescue
- Crane Driver
- Maritime Distress Flares & Signals (Pyrotechnics)
- Vessel Structural Inspection
- Fixed Co2 Fire-Fighting System
- Safety Mooring
- Enclosed Space Entry
- High Voltage
- Fuel Oil Purifier
- Fresh Water Generator

Virtual Reality on Stand-alone Oculus Headset

- Steering Gear
- Fixed Deck Foam Fire Fighting System Operation
- Crane Driver
- Fixed Co2 Fire-Fighting System
- Safety Mooring - Mooring Rope Inspection Assessment
- Safety Mooring - Practical Analyses of Hazards and Associated Risks
- Enclosed Space Entry - Enclosed Space Hazards Assessment
- Enclosed Space Entry - Gas Instruments Assessment
- Enclosed Space Entry - Use of Personal Protective Equipment Assessment
- Enclosed Space Entry - Enclosed Space Entry Permit Assessment
- Fresh Water Generator
- Fuel Oil Purifier
- High Voltage





AUGMENTED REALITY TRAINING PROGRAMS

Experience the revolutionary impact on seafarer training.

Experience the seamless integration of digital information and virtual objects into real-world maritime environments in real time. This tangible innovation is more than just a concept—it's available today for integration into your training curriculum. Picture the simplicity and excitement of using AR to delve into the details of complex machinery. With hands-on interaction in the augmented realm, studying becomes both easy and enjoyable. The incorporation of AR in maritime training marks a transformative shift, providing a dynamic approach to mastering seafaring technologies. Welcome to a training experience where the physical and digital realms converge, defining a new era in maritime education.

We are delighted to share the exciting news that we have integrated Augmented Reality (AR) capabilities into our offerings. Through a partnership with Falcon Reality for AR/MR development, we now extend this innovative technology to our esteemed Partners.

As part of our introduction, we are providing a complimentary 45-day trial of 2-3 AR modules to our existing partner institutes.

Explore the demo titles below, while we also craft custom designs tailored to your specific requirements.

Step into the AR realm with captivating demos of these cutting-edge modules.

Celestial Navigation

A concise 3D explanation of various celestial sphere aspects (beneficial for NCV and 2nd mate candidates).

Main Engine AR

Specifically designed for students studying Engineering Knowledge.

Firefighting

Tailored for students undergoing FPFF and AFF (compatible for use on headsets).





www.isfgroup.in
isfgi@isfgroup.in