



Training Catalog 2023-2024

WWW.ISFGROUP.IN
ISFGI@ISFGROUP.IN





OUR PANEL OF ESTEEMED TRAINERS



**Pawan
Kapoor**



**Hoshang
Dastur**



**Capt. Srirang
Manjeshwar**



**Sudhir
Bhatia**



**Pankaj
Dalvi**



**Dr. Poonam
Kapoor**



**Prathamensh
Dange**



**VK
Chandrasekharan**



**Pradeep
Chakraborty**



**Chitta R
Dash**



**Mukul Kishore
Pande**



**Bhavkaran
Singh**



**Pushkal
Kapoor**



**Capt. Praveen
Rai**



**Rajesh
Malhotra**



**Atul Mani
Sharma**



**Yogyata
Kapoor**



INSTRUCTOR - LED PROGRAMS

An instructor-led course, whether it be online or in a physical classroom setting, is a popular method of learning that allows students to interact with an expert in the subject matter. ISF's panel of expert trainers delivers several training programs for a wide range of participants.

| Course Name | Duration | Target Participants |
|--------------------------------------------------------|------------------------------------------|-----------------------------------------------------|
| Electrical, Electronics, Automation and Controls | 6 Days / 30 Hours | Engineers (All levels) |
| Electronically Controlled Marine Engines | 3 Days / 15 Hours | Engineers - Mgmt. Level |
| Ballast Water Treatment System: Samsung Purimar & NK03 | 1 Day - 8 Hours & 2 Days - 16 Hours | First Assistant Engineer, CE |
| Hydraulics Workshop | 3 Days / 21 Hours | Engineers (All levels) |
| Pneumatics Workshop | 2 Days / 16 Hours | Engineers (All levels) |
| Crane Operation and Maintenance | 2 Days / 16 Hours | Engineers (All levels) |
| Bunker Quality | 1 Day / 7 Hours | All Officers |
| Drydocking and Repairs Management | 4 Days / 16 Hours | CE, 2E, New Superintendents |
| Materials and Processes | 4 Days / 16 Hours | CE, 2E, New Superintendents |
| New Building Project Management | 4 Days / 16 Hours | CE, 2E, New Superintendents |
| New Building Engineering Processes | 4 Days / 16 Hours | CE, 2E, New Superintendents |
| Risk Assessment and Risk Management | 1 Day / 7 Hours | Deck and Engine Officers |
| Accident Investigation and Root Cause Analysis | 1 Day / 7 Hours | Deck and Engine Officers |
| Commercial Ship Operations | 1 Day / 7 Hours | Mgmt. level Deck and Engine Officers |
| Port State Control | 1 Day / 7 Hours | Deck Officers |
| Petroleum Tanker Vetting Inspections | 1 Day / 7 Hours | Deck Officers |
| Shipboard Safety Officer's course | 3 Days / 21 Hours | Deck and Engine Officers |
| Interpersonal and Communication Skills Training | 1 Day / 7 Hours | Shore and Ship Staff |
| Leadership Skills Workshop | 1 Day / 7 Hours | Mgmt. Level Officers, Managers, Superintendents |
| Marine Electrical Program | 2 Days - 16 Hours / 4 Days - 32 Hours | Engineers (All levels) |
| Crew Safety | Half Day / 1 Day | 2nd, 3rd Officer, AB/OS/GS/Chief Cook/Bosun/Pumpman |
| Safety and Operational Excellence Program | 2.5 Days / 16 Hours | Deck, Engine and Saloon Ratings |



E-LEARNING (SELF PACED) PROGRAMS

Self-paced e-learning courses allow learners to complete coursework at their own pace and on their own schedule and often offer flexibility, convenience, and the ability to customize learning to fit individual needs.

Engineering

- Auxiliary Engine
- High Voltage systems (HVCO) (Management Level)
- Incinerator Regulations
- ODME Regulations
- OWS Regulations
- Marine Boilers
- Marine Electrical
- Marine Electronics
- Centrifugal Pumps
- Centrifuges & Purification System
- Refrigeration and Air Conditioning
- Steering Gears
- Submerged Pump
- Oil Record Book
- Hydraulics

Language

- Maritime English Made Easy (MEME)

HSSEQ

- High Voltage Safety Training (HVSC)
- Crew Safety
- Deck and Galley Safety
- Engine Room Safety
- Electrical Safety
- Risk Assessment and Management
- Root Cause Analysis
- Marine Environmental Protection
- Shipboard Energy Efficiency Management Plan
- Shipboard Safety Officer Course
- Commercial Operations Shipping (COPS)
- Drug Abuse
- Piracy Awareness
- Self-Contaminated Breathing Apparatus

Marine Management

- Commercial Operations Shipping (COPS)
- Maritime Labor Convention

HR and Soft Skills

- Assertiveness Skills Development Program
- Multi-Cultural Awareness
- Effective Communication (Maritime)
- Conflict Management
- Motivation
- Stress Management
- Strategic Management
- Team Building

Nautical

- Bridge Procedures
- Hatch Covers
- International Maritime Dangerous Goods Code
- Ship Handling Basics



ONLINE ASSESSMENTS

A Holistic Solution...

ISF offers holistic testing solutions on indigenously developed web portals. The assessments and exams are suitable for companies looking to recruit new candidates and promote their seafarers and employees. These assessments are generated from a large question bank and renewed regularly and include a comprehensive administrator portal, certification, report generation, and other features.

Cadet Selection Test (CST)

New recruits (Pre presea and Post presea) are tested on various subject areas:

- English
- Logical Reasoning
- Physics + Maths + Chemistry
- Basic Marine Engineering
- Basic Deck - Technical
- Safety

For all types of entrants: 10+2, BE, DNS, BSc, GME

12 Personality Characteristics

12PC helps in identifying the various behavioral traits of candidates from entry to senior positions. Traits that are profiled include:

- Outgoing, Emotional Stable, Shrewd, Open to Change, Socially Precise, Abstract Thinking, Dominant, Rule Bound, Practical, Self-Assured, Group Oriented, Relaxed

Aptitude Test

A comprehensive online test for evaluating suitability of a candidate to take up sea career. Includes:

- Mechanical Reasoning
- Spatial Reasoning
- Abstract Reasoning
- Arithmetic Reasoning
- Verbal Reasoning

Competence Assessment Program (CAP) - Maritime

For assessing Deck, Engineering, Electrical officers and ratings in maritime domain subjects.

Specific ship type questions available for

- Chemical Tanker
- Gas Carrier
- Oil Tanker
- Bulk Carrier
- Container Ship
- General Cargo Vessel
- Ro-Ro Vessel

Competence Assessment Program (CAP) - Offshore

For assessing Deck and Engineering candidates in specific subjects on various vessel types:

- Offshore supply
- AHTS
- MSV
- PSV
- Crane, etc.

Maritime English Testing System (MET sys)

METsys is an interactive test with widespread question bank which has questions focusing on various aspects of the language and situations encountered onboard ships.

The METsys is available for different difficulty levels:

- METsys Level 1 – suitable for Ratings
- METsys Level 2 – suitable for Officers.

Other HR & Soft Skills Quizzes

- Cultural Competence Assessment
- Emotional Quotient
- Employee Engagement Index
- Leadership Skills Assessment
- Learning Style Self-Assessment
- Listening Skills Quiz
- Time Management Quiz
- Anger Management Quiz

Add company specific questions and use them for your company employees only with complete privacy and security!



ONBOARD CAREER PROGRESSION PROGRAMS (DISTANCE-LEARNING)

A Vessel is the best place for competence development for smooth career progression. A well-structured and executed program with monitoring onboard, through training department in a company, as well as professional mentors can go a long way in bringing about systematic competence development in a company. The E-SSLA program is designed to be an onboard career progression program which facilitates experience-based learning and encourages meaningful mentorship onboard.

Electronic Version

Program Bundle:

- Android app for candidates with 250+ task-based modules
- Suitable Android tablet for candidates
- App which can work onboard without internet connection
- Guidance notes and instruction manual
- Pre-joining briefing for the program by ISF
- Mentor evaluation and feedback for all tasks and modules
- Website access for company
- Comprehensive reports
- Debriefing and additional training after onboard tenure

Vessels covered:

- All vessels
- Crude Oil Tankers (in compliance with ICMG)
- Product Tankers (in compliance with ICMG)
- Chemical Tankers (in compliance with ICMG)

Ranks covered:

- Junior to third officers (with 3 difficulty levels)
- Third to second officers (with 3 difficulty levels)
- Second to chief officers (with 3 difficulty levels)
- Junior to Fourth Engineers (with 3 difficulty levels)
- Fourth to third engineers (with 3 difficulty levels)
- Third to second engineers (with 3 difficulty levels)
- Trainee Marine Engineers

Paper & Book Version

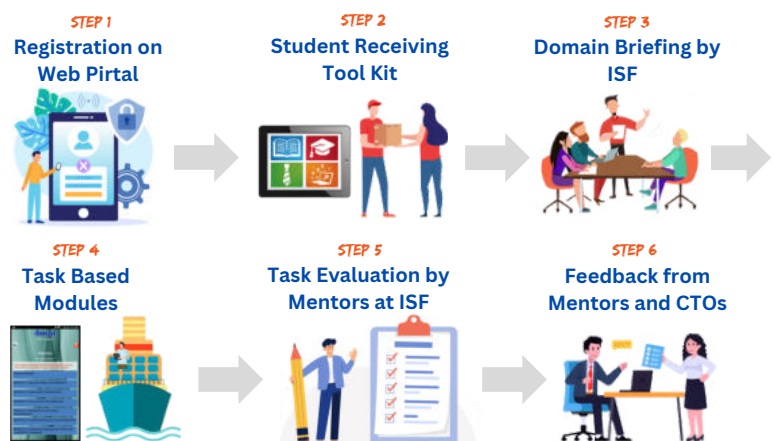
Program Bundle:

- 6 booklets for candidates with task-based modules
- Guidance notes booklet
- Pre-joining briefing for the program by ISF
- Mentor evaluation and feedback for all tasks and modules
- Comprehensive reports which are emailed to the company
- Debriefing and additional training after onboard tenure

Ranks covered:



- Trainee Marine Engineers
- Electrical Trainee Officers

Program Layout





VIRTUAL REALITY TRAINING PROGRAMS

Virtual reality training modules provide a realistic and immersive learning experience for users, are highly customizable, and can be tailored to meet the specific needs of a variety of learners. These training courses allow users to complete training exercises in a convenient and immersive way and have the potential to improve knowledge retention and provide a more engaging learning experience. The VR training is compatible with Oculus Quest 2 . VR programs are offered through a collaboration between ISF and OMS VR. 

Virtual Reality Programs on Oculus with PC

allows for multi-player and high definition programs

- Proficiency In Survival Craft
- Mid-Ship Crane Operation
- Tanker Operation
- Practical Examination Of Life Saving Appliances (LSA)
- Practical Examination Of Fire Fighting Equipment (FFE)
- Practical Examination Of Load Line Related Items
- Emergency Diesel Generator
- Steering Gear
- Fixed Deck Foam Fire Fighting System
- Emergency Fire Pump
- Helicopter Operation
- Wall Wash Test
- Proficiency In Fast Rescue
- Crane Driver
- Maritime Distress Flares & Signals (Pyrotechnics)
- Vessel Structural Inspection
- Fixed Co2 Fire-Fighting System
- Safety Mooring
- Enclosed Space Entry
- High Voltage
- Fuel Oil Purifier
- Fresh Water Generator

Virtual Reality on Stand-alone Oculus Headset

- Steering Gear
- Fixed Deck Foam Fire Fighting System Operation
- Crane Driver
- Fixed Co2 Fire-Fighting System
- Safety Mooring - Mooring Rope Inspection Assessment
- Safety Mooring - Practical Analyses of Hazards and Associated Risks
- Enclosed Space Entry - Enclosed Space Hazards Assessment
- Enclosed Space Entry - Gas Instruments Assessment
- Enclosed Space Entry - Use of Personal Protective Equipment Assessment
- Enclosed Space Entry - Enclosed Space Entry Permit Assessment
- Fresh Water Generator
- Fuel Oil Purifier
- High Voltage





ISF Group

WWW.ISFGROUP.IN

ISFGI@ISFGROUP.IN