

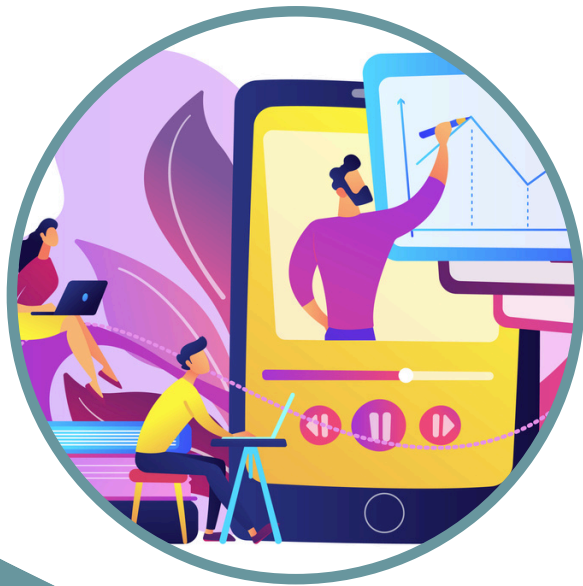


ISF MARITIME AND
OFFSHORE INSTITUTE

Training Catalog

www.isfgroup.in
isfgi@isfgroup.in





INSTRUCTOR - LED PROGRAMS

An instructor-led course, whether it be online or in a physical classroom setting, is a popular method of learning that allows students to interact with an expert in the subject matter. ISF's panel of expert trainers delivers several training programs for a wide range of participants. Some of our top programs are:

Engineering

- Hydraulics Workshop
- Pneumatics Workshop
- Ballast Water Treatment System
- Crane Operation and Maintenance
- Electronically Controlled Marine Engines
- Electrical, Electronics, Automation and Controls

Nautical

- Shipboard Safety Officer's Course
- Risk Assessment and Risk Management
- LPG Liquid Cargo Handling Simulator Training
- Accident Investigation and Root Cause Analysis
- Electronic Chart Display and Information System (ECDIS) Refresher Program
- Draft Survey and Cargo Hold Preparation
- British Admiralty Law

Generic

- Virtual Reality and Augmented Reality Programs
- Team Building
- Crises Management
- Crew Safety Course
- Mental Health and Wellness Program
- Familiarization of Superintendents

Shipbuilding and Dry Docking

- Materials and Processes
- New Building Project Management
- New Building Engineering Processes
- Drydocking and Repairs Management

Marine Management

- Port State Control
- Ship Inspection Report Programme SIRE 2.0
- Commercial Ship Operations
- Mental Health and Wellness Program
- Petroleum Tanker Vetting Inspections

HR and Soft Skills

- Training Faculty Upgradation Workshop
- Interpersonal and Communication Skills Training
- Sustainable Leadership & Management Retreat
- Human Factors: Management & Self-Assessment Training Program

HSSEQ

- Safety and Operational Excellence Program (SOPEX)
- Behavior based Safety
- Dangerous and Hazardous Substances/Cargo





E-LEARNING (SELF PACED) PROGRAMS

Self-paced e-learning courses allow learners to complete coursework at their own pace and on their own schedule and often offer flexibility, convenience, and the ability to customize learning to fit individual needs.

Engineering

- Auxiliary Engine
- High Voltage systems (HVCO) (Management Level)
- Incinerator Regulations
- ODME Regulations
- OWS Regulations
- Marine Boilers
- Marine Electrical
- Marine Electronics
- Centrifugal Pumps
- Centrifuges & Purification System
- Refrigeration and Air Conditioning
- Steering Gears
- Submerged Pump
- Oil Record Book
- Hydraulics

Marine Management

- Commercial Operations Shipping
- Maritime Labor Convention
- Familiarization of Superintendents.

HSSEQ

- High Voltage Safety Training (HVSC)
- Crew Safety
- Deck and Galley Safety
- Engine Room Safety
- Electrical Safety
- Risk Assessment and Management
- Root Cause Analysis
- Marine Environmental Protection
- Shipboard Energy Efficiency Management Plan
- Shipboard Safety Officer Course
- Commercial Operations Shipping (COPS)
- Drug Abuse
- Piracy Awareness
- Self-Contaminated Breathing Apparatus

Language

- Maritime English Made Easy (MEME)

HR and Soft Skills

- Assertiveness Skills Development Program
- Multi-Cultural Awareness
- Effective Communication (Maritime)
- Conflict Management
- Motivation
- Stress Management
- Strategic Management
- Team Building

Nautical

- Bridge Procedures
- Hatch Covers
- International Maritime Dangerous Goods Code
- Ship Handling Basics

New Regulations

- SIRE 2.0

PICTORIAL MODULES

In collaboration with



FOR ALL SHIP TYPES

ENGINE ROOM

- 1.Engine Room Workshop, Designated Hotwork Area, Purifier Room
- 2.Local maneuvering, Emergency Escape routes, Sewage Plant, Incinerator, Garbage station(s), Regular Tests
- 3.Entrance to Engine room, Steering Flat, Emergency Fire Pump, Hypermist System, Chemical Locker

BRIDGE / BRIDGE EQUIPMENT

- 1.Magnetic Compass, Gyro Compass, Radars
- 2.Echo Sounder, Speed Log, Course recorder, GPS/DGPS, Sound reception system, AIS, Sextant, Navtex, VDR, BNWAS
- 3.ECDIS, ECDIS Maintenance and Position fixing
- 4.Various other equipment, Ancilliary Bridge equipment
- 5.Navigation Policies and Procedures
- 6.Observing Bridge Teamwork; A Live Audit
- 7.Log Book entries, Fire Rounds, ETA Procedure, Master's Standing Orders
- 8.Managements of Digital and Paper Charts and Publications
- 9.Passage Plan
- 10.GMDSS Equipment, GMDSS Log and GMDSS Certification
- 11.Monkey Island, Battery Locker
- 12.Pre-Arrival Checks
- 13.Eleventh Hour checks

BRIDGE / BRIDGE EQUIPMENT

- 1.GPS, AIS and Sextant
- 2.Radars and Doppler Log
- 3.Navtex
- 4.Various other Equipment
- 5.VDR and Ancilliary Bridge Equipment
- 6.Course Rec, Echo Sounder and BNWAS
- 7.EPIRB and SART
- 8.Logbooks
- 9.Gyro and Magnetic Compasses
- 10.Master's Standing Orders
- 11.Monkey Island and Battery Room
- 12.ETA & Fire Rounds
- 13.UKC Calculations
- 14.Passage planning 1 and 2
- 15.ECDIS Inspection Round
- 16.ECDIS Safety Settings 1 and 2
- 17.GMDSS Equipment

ACCOMMODATION

- 1.General checks , cabin inspections, Fire extinguishers, Fire Doors, Laundry/Drier Rooms, Common toilets, Changing Rooms, Garbage Receptacles and bins
- 2.Pre-arrival checks & Eleventh Hour checks
- 3.Virtual Tour of the Accommodations Internal Areas

FORECASTLE AREA

- 1.Virtual Tour of the Forecastle deck, Bosuns store and associated equipment

HOSPITAL

- 1.Complete Pre-Inspection round of the Hospital

GALLEY

- 1.Galley & Messrooms
- 2.Store Rooms, Reefer Chambers & Pre-arrival checks

PICTORIAL MODULES

In collaboration with



FOR ALL SHIP TYPES

LSA / FFA

- 1.L'buoy and MOB markers
- 2.Emcy Fire Pump and other Fixed FFA
- 3.CO2 Rooms
- 4.ISC Fire Flaps, Fire plan IMO symbols
- 5.EEBD
- 6.Fire extinguishers
- 7.Fire Hoses, Hydrants, Boxes
- 8.Davit Launched Totally Enclosed Lifeboats and Launching Appliances
- 9.Freefall Lifeboats and Launching Appliances
- 10.Lifeboat Launching Appliances
- 11.Rescue boats
- 12.Liferaft
- 13.Lifejackets Immersion suits
- 14.Fireman's outfit, SCBA (Including Donning Procedure) & SCBA Compressor
- 15.L'buoy and MOB markers
- 16.Emcy Fire Pump and other Fixed FFA
- 17.CO2 Rooms
- 18.ISC Fire Flaps, Fire plan IMO symbols
- 19.EEBD
- 20.Fire extinguishers
- 21.Fire Hoses, Hydrants, Boxes
- 22.Davit Launched Totally Enclosed Lifeboats and Launching Appliances
- 23.Freefall Lifeboats and Launching Appliances
- 24.Lifeboat Launching Appliances
- 25.Rescue boats
- 26.Liferaft
- 27.Lifejackets Immersion suits
- 28.Fireman's outfit, SCBA (Including Donning Procedure) & SCBA Compressor

LSA / FFA

- 1.L'buoy and MOB markers
- 2.Emergency Fire Pump
- 3.Fixed CO2 system
- 4.Fire Control Plan
- 5.EEBD
- 6.Fire extinguishers
- 7.Fixed High Exp Foam systems
- 8.Fire mains and Fire hoses
- 9.Liferaft
- 10.Lifejackets
- 11.Fireman's outfit
- 12.IMO Symbols
- 13.International Shore Connection
- 14.Launching appliances
- 15.Immersion Suits
- 16.LSA FFA Documentation
- 17.Lifeboats - Freefall
- 18.Lifeboats - Totally enclosed
- 19.Other fixed FFA
- 20.Rescue Boats
- 21.SCBA Compressor
- 22.Vent fan stops and Fire flaps
- 23.Foam Monitor
- 24.Pre Arrival checks

PICTORIAL MODULES

In collaboration with



FOR ALL SHIP TYPES

ENVIRONMENTAL PROCEDURES

1. Marpol Violation and its Consequences
2. Garbage Incineration
3. Reporting MARPOL Violations
4. Environmental Seals
5. Emergency Bilge Connections
6. Oily Water Separator & Audit Requirements
7. Managing Bilge and Sludge on board
8. Bunkering & Purifier Operations
9. Handling Sewage, Gray Water and Ballast water
10. Minimising Air Pollution
11. Marpol Violation and its Consequences
12. Garbage Incineration
13. Reporting MARPOL Violations

AFT DECK AREA

1. Just outside the Accommodation; LSA-FFA, Watertight doors, Vents, Deck Area Provision Crane
2. Paint Store & Sample Locker
3. Specific areas
4. Mooring areas
5. Emergency Generator Room
6. General Round
7. Paint Store & Sample Locker
8. Specific areas

INSPECTOR JUNIOR

1. Emergency Alarms, Drills, Training, Fireman's Outfit, SCBA, EEBD
2. Anti-Pollution Awareness, Ballast water Convention, MARPOL Compliance declaration
3. Enclosed Space Entry Procedures, Use of Gas equipment
4. Hotwork Permits, Various Work Permits
5. Risk Assessment and Tool box meetings, Smoking regulations, Drug and
6. Alcohol Policy, Fire Round Procedure
7. Deck Rounds, Mooring Systems and Operations
8. Engine Room Rounds; Emergency Action - Bunker watch.
9. Galley; Emergency Action; Use of comminuter; MLC Compliance
10. Gangway access control procedures
11. Precautions against exposure to toxic gases
12. Vent Fan Stops; Garbage Regulations
13. Ship Safety officer & Ship Security Officer
14. Restricted Areas, ISPS Awareness, Cyber Security Precautions
15. MLC Awareness
16. ISM Awareness
17. Bunkering procedures
18. Awareness of all Bridge equipment-AutoP changeover, VDR and Echo S
19. Ballast water and Sedimentation Management plan
20. Bridge Manning Levels
21. Enclosed Space Entry Procedures
22. Hotwork Procedures & Welding Equipment
23. Master's Standing Orders
24. TBN
25. Risk Assessment and Tool box meetings
26. ECDIS
27. Mooring Systems
28. Gas equipment

PICTORIAL MODULES

In collaboration with



FOR TANKERS

ENGINE ROOM

1. UMS Entry; Engine Control Room, Main and Emergency Switchboard; Engine Log books
2. Around Engine Room; Gray water management; COP Turbine Platform (T); Inert Gas System (T), IG O2 Analyzer (T), LSA-FFA
3. Bottom Platform, Oily water separator, Sludge/Bilge Systems, Equipment and Machinery
4. Pre-Arrival Checks and Eleventh Hour checks

EHQ / FOAM ROOM

1. A Pre-Inspection round of the EHQ
2. Virtual Tour of the EHQ /Foam Room

FORECASTLE AREA

1. SBM Stopper (T), Moorings, Anchors and Anchoring equipment, Forecastle Deck area, Fore Mast Bosun's Store, Educator System
2. Pre-arrival checks & Eleventh hour checks

UPPER DECK

1. Main Deck - Midship
2. Main Deck - Mooring Areas
3. Crane Inspection
4. Gangway Inspection
5. Holds and Bilges
6. Operational Tests on tankers
7. Crane Inspection

LSA FFA

1. Foam Systems
2. Monitors
3. Iso Valves
4. Applicators

ACCOMMODATION

Notice Boards, Smoking Rooms, Elevator, Other random checks

AFT DECK AREA

1. Emergency Generator room, CO2 room, BWTS Room, Vents
2. Mooring Station, Aft ETA
3. Paint Locker, Sample Locker, MSDS
4. Pre-arrival checks and Eleventh Hour checks

OIL TANKERS

CARGO CONTROL ROOM

1. Fixed Gas Alarm Systems, Fixed Tank Level Gauges, Information Posted up in CCR
2. Cargo Plan, Secondary Venting Requirements, Pumproom Emergency Bilge Suction, Ship Shore Safety Checklist, Other Checks in CCR
3. Pre-arrival checks & Eleventh-Hour checks

PUMP ROOM

1. Top Platform
2. Pumproom Bottom, Sea Chest Valve, Other checks
3. Pre-arrival checks and Eleventh-Hour checks
4. Virtual Tour of the Pumproom including Fire dampers.

ELEVENTH HOUR CHECKS

1. Bridge
2. Accommodation, Ship's Office, Aft Deck
3. Engine room & Gangway
4. Main Deck & Forecastle

EHC VT

1. Bridge
2. Accommodation CCR Aft Deck
3. Main Deck and Forecastle
4. Pumproom

PICTORIAL MODULES

In collaboration with



NON TANKERS

ENGINE ROOM

1. UMS Entry; Engine Control Room, Main and Emergency Switchboard; Engine Log books
2. Around Engine Room; Gray water management
3. Bottom Platform, Oily water separator, Sludge/Bilge Systems, Equipment and Machinery
4. Pre-Arrival Checks and Eleventh Hour checks

ACCOMMODATION

1. Notice Boards, Smoking Rooms, Elevator, Other random checks
2. A Pre-Inspection round of the EHQ
3. Virtual Tour of the Emergency Head Quarters
4. EHQ

AFT DECK AREA

1. Emergency Generator room, CO2 room, BWTS Room, Vents
2. Mooring Station, Gangway
3. Paint Locker, MSDS
4. Pre-arrival checks and Eleventh Hour checks

FORECASTLE AREA

1. Moorings, Anchors and Anchoring equipment, Forecastle Deck area, Fore Mast
2. Bosun's Store, Eductor System
3. Pre-arrival checks & Eleventh Hour checks

LSA FFA

1. Foam Systems, Iso Valves, Applicators

EHC VT

1. Bridge
2. Accommodation & Aft Deck
3. Main Deck and Forecastle

BULK CARRIERS

ELEVENTH HOUR CHECKS

1. Bridge
2. Accommodation, Ship's Office, Aft Deck
3. Main Deck & Forecastle

UPPER DECK

1. Main Deck - Forward of Midship; Accom to Midship
2. Pilot Ladder Maintenance
3. 22 handpicked deck checks in 5 Mins
4. Hatch Covers
5. Operational Tests on Deck
6. Pilot Ladder Maintenance

SHIP TYPES

DOCUMENTATION

1. Detailed Pre-Inspection guide for the Master's documents.
2. Detailed Pre-Inspection guide for the Chief Engineer's documents.
3. Detailed Pre-Inspection guide for the Chief Officer's documents.
4. Detailed Pre-Inspection guide for the Security Officer's documents.

SIMULATION GAMES

In collaboration with 

SIMULATION GAMES FOR VARIOUS RANKS

1. Bridge Round: Compasses, GMDSS, Standing Orders & other Bridge equipment
2. Engine Round: Emergency Generator, QCV, Engine Room general round, Steering flat
3. General Safety Awareness: RA, Toolbox, Enclosed space
4. Inspector at Gangway: Receiving an Inspector at the Gangway
5. Mock Deck Rounds: Deck Rounds and Moorings
6. Rest Hours
7. Basic Safety Familiarization: Fire Alarms, Drills, Lifeboat Engines, FFA, Emergency Equipment, Company Familiarization
8. ECDIS Familiarization: Safety Depth
9. Galley Interview: Precautions and safety in Galley; Garbage Management; Maintenance and control of Provisions; Considerations on cooking and diversity
10. Bridge - Passage Plan and Attitude development: Passage Plan (Multiple Scenarios) and developing the right attitude
11. Bridge Teamwork: Various scenarios during Navigation; Acting with a Pilot on the Bridge.; Teamwork when Handling emergencies; Challenge and Response.
12. Bridge - Job delegation
13. Bridge - Chart Maintenance: Upkeep of Charts and Publications; Admiralty Information Overlay; Removal of expired publications/charts LSA FFA Documentation: LSA FFA Documentation aspects; SOLAS Training Manual; Lifeboat recordkeeping; Type approval of LSA FFA Equipment
14. Bridge - Navigational Policies: Knowledge of Bridge Manning Levels; Handing over of watch; Action of Bridge team in Pilotage waters; Awareness of Master's standing orders

SIMULATION GAMES FOR PROMOTIONS

C/E or 2/E due for promotion:

1. Oil Record Book.; Training of Engine Room personnel; Oily water separator; Annex VI Compliance
2. Handling known defects on board.; Testing Fire Sensors; Lube Oil Analysis; Planned Maintenance System
3. Enclosed Space Entry; Toolbox Meetings
4. Tool box meetings; Rest Hours; Seal Management; Nearmiss reporting; Stowage of Flammable liquids

Chief officer or 2/O due for promotion:

1. Loadicator; Damage Stability; Hold cleaning Chemicals; Cargo Hazards; Cargo Plan; MSDS
2. Loadicator; Damage Stability; Oil Record Book 2; Engine Room to Slop Oil transfer; Cargo Plan; MSDS
3. Ballast water exchange; Shipboard Familiarization; Gas equipment
4. Enclosed Space Entry; Toolbox Meetings
5. Tool box meetings; Rest Hours; Seal Management; Nearmiss reporting; Stowage of Flammable liquids
6. Tool box meetings; Rest Hours; Seal Management; Nearmiss reporting; Stowage of Flammable liquids

Masters & C/O due for promotion:

1. Change of Load lines; Internal Audit Closure; Familiarization with Manuals; SOPEP Manual and updation
2. Collective Bargaining Agreement; Drug and Alcohol Policy; Safety Meeting; Accommodation inspection

GAMIFIED EVALUATIONS

In collaboration with



MASTER

1. Safety Management
2. Navigation
3. Emergencies
4. Documentation & Certification

CHIEF OFFICER

1. Cargo & Balast Operations
2. Crew Management
3. Emergencies
4. Safety Management
5. Inspector Questions

SECOND OFFICER

1. Bridge Procedure and Equipment
2. Cargo & Ballast Ops
3. Emergencies
4. Hospital medical Locker
5. Inspector Questions

THIRD OFFICER

1. Bridge Procedure and Equipemt
2. Cargo & Ballast Ops
3. Port Documents
4. Inspector Questions
5. Emergencies

CHIEF ENGINEER

1. Boilers
2. Bunkering
3. Documentation
4. Electrical
5. Pollution
6. Refregarator
7. Safety
8. Steering
9. Survey

SECOND ENGINEER

1. Boilers
2. Crew Management
3. Documentation
4. Main Engine
5. Pollution
6. Refregarator
7. Pumps
8. Steering
9. Auxiliaries

ELECTRICAL OFFICER

1. Auxiliaries
2. Boilers
3. Electrical
4. Refrigerator
5. Safety
6. ETO Evaluation

THIRD ENGINEER

1. Air compressor
2. Auxiliaries engine
3. Auxiliary
4. Boilers
5. Main Engine
6. Pollution
7. Pumps
8. Refrigeration
9. Safety
10. Steering & Electrical

FOURTH ENGINEER

1. Purifier
2. Bunkering
3. Auxiliary Engine
4. LSA FFA
5. Main Engine
6. Pollution
7. Pumps
8. Refrigeration
9. Safety watchkeeping

CADETS

1. Deck Cadet
2. Engine Cadet
3. Engine or ETO Cadet



+91 22 42951727



isfgi@isfgroup.in



www.isfgroup.in

OTHER NOTABLE MODULES

In collaboration with 

US COAST GUARD INSPECTION

A set of 4 Modules which together form the entire guidance material for the seafarer to gain confidence when preparing for an USCG Inspection, and telling him what to expect.

AMSA (AUSTRALIA) INSPECTION FOR OIL TANKERS AND BULK CARRIERS

An elaborate set of 6 Modules which together form the entire guidance material for the seafarer to gain confidence when preparing for an AMSA Inspection, and telling him what to expect. The program also includes a self audit system which can also be used for remote audits.

ANNUAL CLASS INSPECTION

A set of 2 Modules which together form the entire guidance material for the seafarer to gain confidence when preparing for an Annual Inspection, and telling him what to expect.

PORT STATE INSPECTIONS

- A pictorial list of 99 most significant detainable deficiencies.
- A guide to an efficient PSC Inspection

MOVEMENT BOOK ENTRIES

Guidance to Movement Book entries

MAINTAINING REST HOUR RECORDS

Guidance to Rest Hour Records

ENCLOSED SPACE ENTRY

- Procedures for Enclosed Space Entry
- A game to assess the decisions related to Enclosed space entry
- Guidance to Enclosed Space Entry procedures

WORK PERMITS

- Compliance with Work Permits (Example: Enclosed space entry permit)
- Guidance to Work Permits and Compliance

SEEMP

OILY WATER SEPARATOR

- OWS
- Bilge water management

RISK ASSESSMENT

- Risk Assessment principles and basics
- Examples and case studies

OTHER NOTABLE MODULES

In collaboration with



REEFER AND AIRCON TRAINING

A set of 4 Modules which includes Gamification and Storytelling, used to train the ship staff on Reefer and Aircon systems. The process includes an inbuilt assessment to judge the competence of a person in handling real- life problems on board

ENGINE ROOM SAFETY

A set of modules that take your through Engine Room Safety precautions through a detective storyline, including Gamification and Storytelling concepts, testing and confirming your knowledge along the way. Can be used both for verifying knowledge and/or for educating.

BOILER TRAINING

A set of 3 Modules which includes Gamification and Storytelling, used to train the ship staff on Boilers & find out how that person would react to real world problems.

PILOTAGE

A set of modules that focus on how to bridge team must conduct themselves during Pilotage. Depicts a real life scenario, together with instructions at each step.

AUXILLIARY ENGINES

A set of 4 Modules which includes Gamification and Storytelling, used to train the ship staff on Auxilliary Engines in the Engine Room & find out how that person would react to real world problems.

CARGO TALES

Oil Tankers Cargo operations guide based on problem solving scenarios

DECISIONS

A multiple ending Interactive video to emphasize decisions

LEARNING FROM A GROUNDING INCIDENT

Learning lessons taken from the depiction of a real incident, where candidates are encouraged to detect problems in the choices the bridge team makes that leads to an unfortunate incident.

CYBER SECURITY FOR SHIP AND OFFICE STAFF

A set of 6 Videos on Cyber security, used to train the ship staff on the vulnerabilities and precautions to be taken.

OTHER NOTABLE MODULES

In collaboration with 

SHORTS AND REELS

- | | |
|--|---|
| <ul style="list-style-type: none">• Accommodation Set: Set of 12 reels• Aft Deck Area Set: Set of 51 reels• Bridge Set: Set of 107 reels• Main Deck Set: Set of 125 reels• LSA FFA Set: Set of 119 reels• Hospital Set: Set of 7 reels• Galley Set: Set of 9 reels• Forecastle Set: Set of 13 reels | <ul style="list-style-type: none">• Foam Room & EHQ Set: Set of 12 reels• Engine Room Set: Set of 52 reels• Enclosed Space Entry Set: Set of 13 reels• Cybersecurity Set: Set of 12 reels• EHC Bulk Carriers Set: Set of 23 reels• EHC Tankers Set: Set of 33 reels• Tanker CCR Set: Set of 10 reels• Tanker - Pumproom Set: Set of 13 reels |
|--|---|

SIRE 2.0 AWARENESS - BRIDGING THE GAP

- | | |
|--|---|
| <ul style="list-style-type: none">• Intro to the SIRE 2.0 Awareness Course• Intro to Instructors & SIRE 2.0• Why SIRE 2.0• The SIRE 2.0 Question Library• Bow tie Analysis• Inspection Sequence• Living repositories + Photo Repository• Certificate Repository• Performance Influencing Factors (PIFs)• Compiled Vessel Inspection Questionnaires (CVIQ)• Pre-Inspection Questionnaire (PIQ)• Events leading to an inspection• Inspection Time Distribution | <ul style="list-style-type: none">• Opening Meeting and Defect List• Negative observation module• Closing Meeting & Office Response• Workshop - The Observation• Workshop - The Inference• F.A.Q.s - 1• F.A.Q.s - 2• F.A.Q.s - 3• Aligning TMSA Element 14• How OCIMF developed SIRE 2.0• Practical Suggestions 1 (Mr Avinash)• Practical Suggestions 2 (Mr Avinash)• Practical Suggestions 3 (Mr Avinash)• Practical Suggestions 4 (Capt. Vaz)• Practical Suggestions 5 (Mr Avinash) |
|--|---|



ONLINE ASSESSMENTS

A Holistic Solution...

ISF offers holistic testing solutions on indigenously developed web portals. The assessments and exams are suitable for companies looking to recruit new candidates and promote their seafarers and employees. These assessments are generated from a large question bank and renewed regularly and include a comprehensive administrator portal, certification, report generation, and other features.

Cadet Selection Test (CST)

New recruits (Pre presea and Post presea) are tested on various subject areas:

- English
- Logical Reasoning
- Physics + Maths + Chemistry
- Basic Marine Engineering
- Basic Deck - Technical
- Safety

For all types of entrants: 10+2, BE, DNS, BSc, GME

12 Personality Characteristics

12PC helps in identifying the various behavioral traits of candidates from entry to senior positions. Traits that are profiled include:

- Outgoing, Emotional Stable, Shrewd, Open to Change, Socially Precise, Abstract Thinking, Dominant, Rule Bound, Practical, Self-Assured, Group Oriented, Relaxed

Aptitude Test

A comprehensive online test for evaluating suitability of a candidate to take up sea career. Includes:

- Mechanical Reasoning
- Spatial Reasoning
- Abstract Reasoning
- Arithmetic Reasoning
- Verbal Reasoning

Competence Assessment Program (CAP) - Maritime

For assessing Deck, Engineering, Electrical officers and ratings in maritime domain subjects.

Specific ship type questions available for

- Chemical Tanker
- Gas Carrier
- Oil Tanker
- Bulk Carrier
- Container Ship
- General Cargo Vessel
- Ro-Ro Vessel

Competence Assessment Program (CAP) - Offshore

For assessing Deck and Engineering candidates in specific subjects on various vessel types:

- Offshore supply
- AHTS
- MSV
- PSV
- Crane, etc.

Maritime English Testing System (MET sys)

METsys is an interactive test with widespread question bank which has questions focusing on various aspects of the language and situations encountered onboard ships.

The METsys is available for different difficulty levels:

- METsys Level 1 – suitable for Ratings
- METsys Level 2 – suitable for Officers.

Other HR & Soft Skills Quizzes

- Cultural Competence Assessment
- Emotional Quotient
- Employee Engagement Index
- Leadership Skills Assessment
- Learning Style Self-Assessment
- Listening Skills Quiz

Add company specific questions and use them for your company employees only with complete privacy and security!



ONBOARD CAREER PROGRESSION PROGRAMS (DISTANCE-LEARNING)

A Vessel is the best place for competence development for smooth career progression. A well-structured and executed program with monitoring onboard, through training department in a company, as well as professional mentors can go a long way in bringing about systematic competence development in a company. The E-SSLA program is designed to be an onboard career progression program which facilitates experience-based learning and encourages meaningful mentorship onboard.

Electronic Version

Program Bundle:

- Android app for candidates with 250+ task-based modules
- Suitable Android tablet for candidates
- App which can work onboard without internet connection
- Guidance notes and instruction manual
- Pre-joining briefing for the program by ISF
- Mentor evaluation and feedback for all tasks and modules
- Website access for company
- Comprehensive reports
- Debriefing and additional training after onboard tenure

Vessels covered:

- All vessels
- Crude Oil Tankers (in compliance with ICMG)
- Product Tankers (in compliance with ICMG)
- Chemical Tankers (in compliance with ICMG)

Ranks covered:

- Junior to third officers (with 3 difficulty levels)
- Third to second officers (with 3 difficulty levels)
- Second to chief officers (with 3 difficulty levels)
- Junior to Fourth Engineers (with 3 difficulty levels)
- Fourth to third engineers (with 3 difficulty levels)
- Third to second engineers (with 3 difficulty levels)
- Trainee Marine Engineers

Paper & Book Version

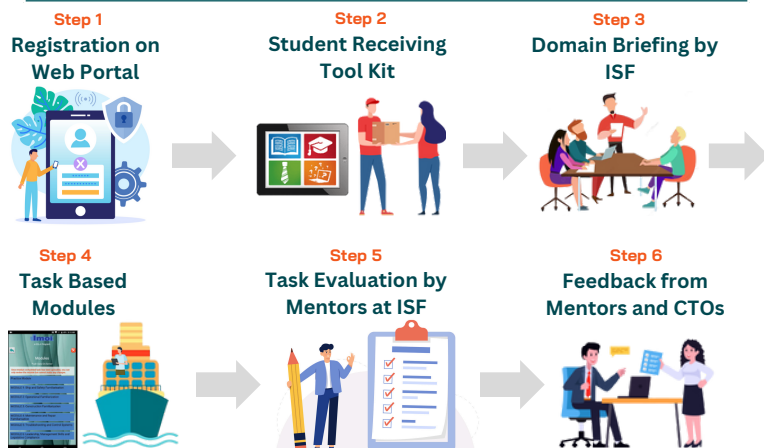
Program Bundle:

- 6 booklets for candidates with task-based modules
- Guidance notes booklet
- Pre-joining briefing for the program by ISF
- Mentor evaluation and feedback for all tasks and modules
- Comprehensive reports which are emailed to the company
- Debriefing and additional training after onboard tenure

Ranks covered:

- Trainee Marine Engineers
- Electrical Trainee Officers

Program Layout





VIRTUAL REALITY TRAINING PROGRAMS

Virtual reality training modules provide a realistic and immersive learning experience for users, are highly customizable, and can be tailored to meet the specific needs of a variety of learners. These training courses allow users to complete training exercises in a convenient and immersive way and have the potential to improve knowledge retention and provide a more engaging learning experience. The VR training is compatible with Oculus Quest. VR programs are offered through a collaboration between ISF and OMS VR.



Virtual Reality Programs on Oculus with PC

allows for multi-player and high definition programs

- Proficiency In Survival Craft
- Mid-Ship Crane Operation
- Tanker Operation
- Practical Examination Of Life Saving Appliances (LSA)
- Practical Examination Of Fire Fighting Equipment (FFE)
- Practical Examination Of Load Line Related Items
- Emergency Diesel Generator
- Steering Gear
- Fixed Deck Foam Fire Fighting System
- Emergency Fire Pump
- Helicopter Operation
- Wall Wash Test
- Proficiency In Fast Rescue
- Crane Driver
- Maritime Distress Flares & Signals (Pyrotechnics)
- Vessel Structural Inspection
- Fixed Co2 Fire-Fighting System
- Safety Mooring
- Enclosed Space Entry
- High Voltage
- Fuel Oil Purifier
- Fresh Water Generator

Virtual Reality on Stand-alone Oculus Headset

- Steering Gear
- Fixed Deck Foam Fire Fighting System Operation
- Crane Driver
- Fixed Co2 Fire-Fighting System
- Safety Mooring - Mooring Rope Inspection Assessment
- Safety Mooring - Practical Analyses of Hazards and Associated Risks
- Enclosed Space Entry - Enclosed Space Hazards Assessment
- Enclosed Space Entry - Gas Instruments Assessment
- Enclosed Space Entry - Use of Personal Protective Equipment Assessment
- Enclosed Space Entry - Enclosed Space Entry Permit Assessment
- Fresh Water Generator
- Fuel Oil Purifier
- High Voltage





AUGMENTED REALITY TRAINING PROGRAMS

Experience the revolutionary impact on seafarer training.

Experience the seamless integration of digital information and virtual objects into real-world maritime environments in real time. This tangible innovation is more than just a concept—it's available today for integration into your training curriculum. Picture the simplicity and excitement of using AR to delve into the details of complex machinery. With hands-on interaction in the augmented realm, studying becomes both easy and enjoyable. The incorporation of AR in maritime training marks a transformative shift, providing a dynamic approach to mastering seafaring technologies. Welcome to a training experience where the physical and digital realms converge, defining a new era in maritime education.

We are delighted to share the exciting news that we have integrated Augmented Reality (AR) capabilities into our offerings. Through a partnership with Falcon Reality for AR/MR development, we now extend this innovative technology to our esteemed Partners.

As part of our introduction, we are providing a complimentary 45-day trial of 2-3 AR modules to our existing partner institutes.

Explore the demo titles below, while we also craft custom designs tailored to your specific requirements.

Step into the AR realm with captivating demos of these cutting-edge modules.

Celestial Navigation

A concise 3D explanation of various celestial sphere aspects (beneficial for NCV and 2nd mate candidates).

Main Engine AR

Specifically designed for students studying Engineering Knowledge.

Fire fighting

Tailored for students undergoing FPFF and AFF (compatible for use on headsets).





TRAINING CENTRE LOCATIONS, INDIA

HQ & Training Centre - Mumbai, City

ISF Maritime Services in Malad offers a variety of training programs, including classroom, self-paced, and onboard courses for all ranks. The classroom with space for 12 people can hold technical and non-technical programs and is equipped with Electrical Lab.

Residential Campus by Riverside - Raigad, Maharashtra

The Confluence, Center of Yoga Science and Sustainability, situated in Pali, Raigad, offers a range of programs focused on leadership, team building, ESG, Mentorship, sustainability and sustainable development, with accommodation available for up to 24 participants.

Offshore Training Center - Panvel, Maharashtra

NUSI Offshore Training Institute (NOTI), our academic partner, offers a range of offshore courses. It features advanced training facilities, innovative teaching methods, expert trainers, and residential accommodations for candidates.

Skill Development Centre - Valsad, Gujarat

Mohamed Ebrahim Serang Centre (MESCC), another academic partner, provides diverse skill development programs for ratings and trainees. It boasts expert trainers, state-of-the-art training facilities, and a focus on the latest and most innovative teaching techniques.



www.isfgroup.in
isfgi@isfgroup.in